

Meadows of the Malvern Chase

Cycle Route



Protecting **wildlife** where we live

Meadows of the Malvern Chase

Cycle Route

This cycle route takes you past or close to some of Worcestershire Wildlife Trust's nature reserves. The Trust is working towards creating a county that has bigger and better wild areas, which are better connected and where wildlife can thrive. In turn this will create a Worcestershire where people will be able to lead healthier and happier lives.

The meadows and floodplain meadows of this area form 'stepping stones' for wildlife to move through the landscape and where the Trust can demonstrate the importance of protecting the existing wildlife value and encourage neighbouring landowners to manage their land less intensively. 97% of the UK's wildflower meadows have been lost since the 1940s.

When cycling the route please stop off from time to time to enjoy our nature reserves in the area. Leave your bicycle at the entrance while you explore the reserves on foot (if permitted).

We recommend that you cycle this route in a clockwise direction.



Wendy Carter

The Hardwick Green Meadows Project

Funded by the National Lottery Heritage Fund, this project ran from 2018 to 2020, the meadows having been purchased by Worcestershire Wildlife Trust in 2017. It delivered a range of activities to raise awareness about the importance, decline and vulnerability of our county's historic meadows and involved working with several partners, local school children, local residents and neighbouring landowners/farmers.

See www.worcswildlifetrust.co.uk for further information about Worcestershire Wildlife Trust.

Sustrans is the charity that's enabling people to travel by foot, bike or public transport for more of the journeys we make every day. Our work makes it possible for people to choose healthier, cleaner and cheaper journeys, with better places and spaces to move through and live in.

See www.sustrans.org.uk for further information about Sustrans.



Front cover image Wendy Carter

Worcestershire Wildlife Charity Number 256618
Sustrans Charity Number 326550

① Hill Court Farm & The Blacklands

GL20 6BD GR: SO826355 300 acres/120 hectares

Once an intensive dairy and arable farm, Worcestershire Wildlife Trust is working to gradually restore the grazing marshes, wetlands, water channels, pools and lagoons to a wildlife-friendly landscape. The habitats will take time to mature and we are working with neighbouring landowners to adopt more wildlife-friendly management of their land.

There is a permissive pedestrian access from Marsh Road along the brook to a set of viewing screens between the main wetland fields. Please stay on the path.

② Poolhay Meadows

GL19 4LZ GR: SO831306 7.5 acres/3 hectares

Spring and summer are the best times to visit these colourful meadows with their diverse range of wildflowers. Hay is cut in July after the plants have set seed and cattle graze it from August to October.

Please keep to the public right of way and close gates in case of cattle grazing.

③ Hardwick Green Meadows

GL19 4PH GR: SO811324 50 acres/20.2 hectares

Hardwick Green Meadows represent 1.5% of all floodplain meadows remaining in the UK and the reserve is, therefore, of national and local importance. The meadows are rich in plant species such as great burnet, the flagship species of floodplain meadows, that in turn attract insects including a variety of butterfly species. Otters have been filmed on the brooks that run through the site.

Because of the delicate nature of the reserve and/or that cattle may be grazing access is by permit only or during summer open events.

④ Duke of York & Ryefield Meadows

WR13 6JQ GR: SO782354

Duke of York

2.4 acres/1 hectare

Over 120 plant species have been recorded here and it is notable for its spectacular show of native wild daffodils in spring. There are traces of ridge and furrow indicating that this meadow was once ploughed.

Flowers can be seen easily from the gate in the car park.

Ryefield Meadows

7.4 acres/3 hectares

Daffodils and other wildflowers are a feature here too.

Accessible only by public footpath.

For centuries, both fields have been used to grow a hay crop from April, which is cut in July and then grazed over autumn and winter.



Wendy Carter

⑤ Hollybed Farm Meadows

WR13 6BU GR: SO779382 40 acres/16 hectares

This is the Trust's largest meadow nature reserve. One field, Far Starling Bank, is a Site of Special Scientific Interest (SSSI) because of its traditional hay meadow plants. The reserve also includes an old orchard and a brook plus areas of scrub and mature hedgerows. All are being managed to maximise their benefit to wildlife.

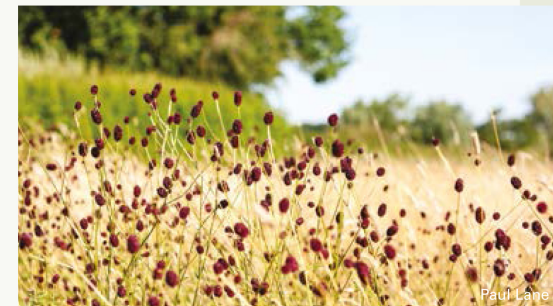
Please keep to the rights of way.

⑥ Melrose Farm Meadows

WR8 0AU GR: SO817413 5 acres/2 hectares

Although tiny, more than 130 plant species have been recorded on this particularly important example of an old Worcestershire meadow.

Access is limited to the public footpath that runs through the reserve.



Paul Lane

⑦ Brotheridge Green

WR8 0AU GR: SO817413 4.5 acres/1.8 hectares

Part of the old Tewkesbury to Malvern railway line, this nature reserve is now colonised by grass, scrub and young trees. The deep railway cutting and damp soil compares with the drier soils on the embankment, encouraging different plant species and associated invertebrates to flourish.

Please keep to the path.

⑧ Nash's Meadows

WR8 0AT GR: SO816414 29 acres/11.8 hectares

Nash's Meadows are undergoing restoration from a relatively species-poor condition with seed taken from nearby reserves. Restoration could take 25 years.

Only a small area is open for general access along the public footpath.

⑨ Boynes Coppice & Meadows

WR8 0SB GR: SO832410 20 acres/8 hectares

Four meadows surround a small woodland, which together support a wealth of insects. Three of the meadows were agriculturally improved in the past, thereby reducing their value to wildlife, but are gradually developing a richer flora under the Trust's management.

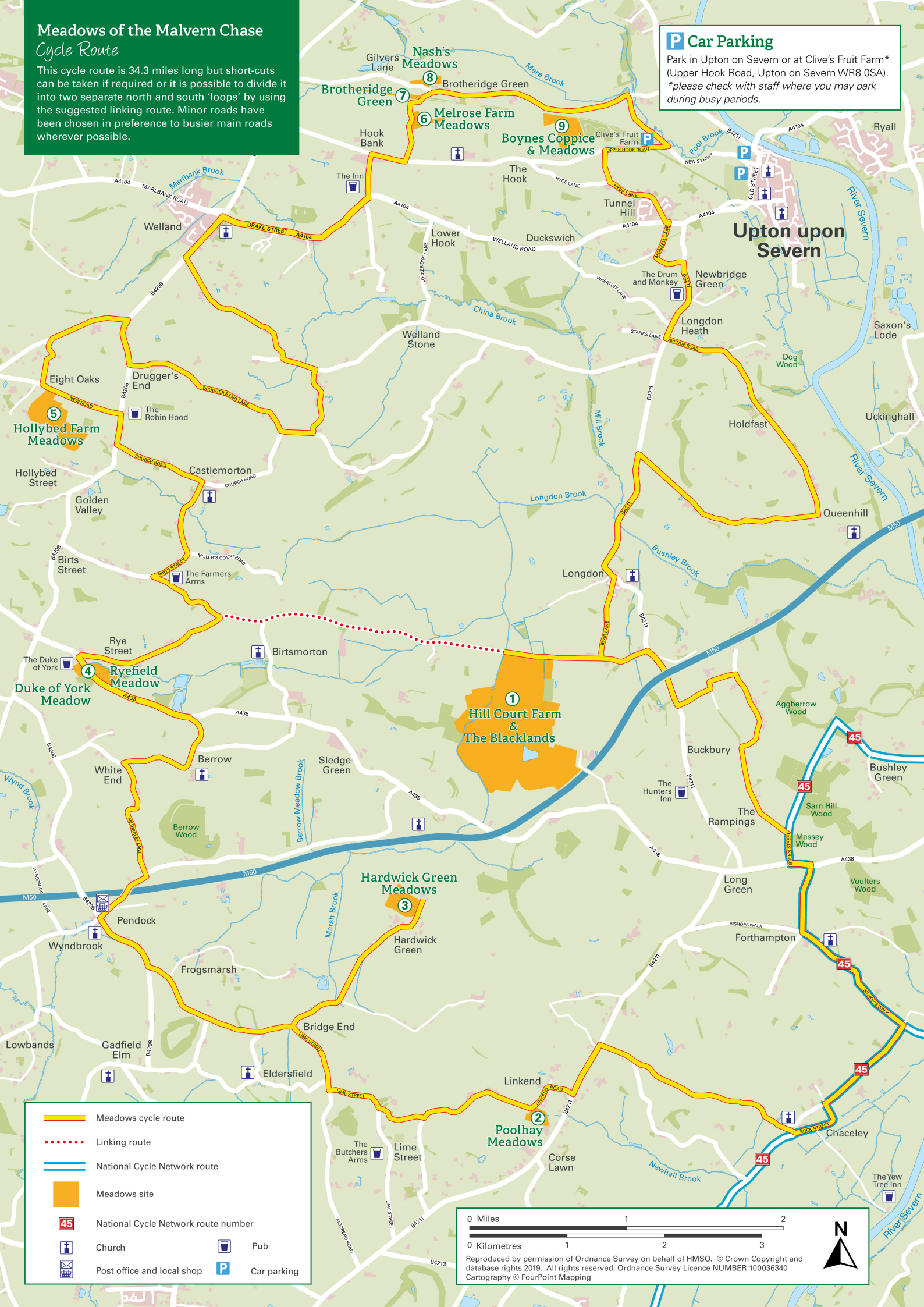
Please keep to the public footpath, part of which is on a slope and can be muddy. A permit is required to visit the small (SSSI) meadow.

More information about these and other Worcestershire Wildlife Trust nature reserves can be found here:
www.worcswildlifetrust.co.uk

Meadows of the Malvern Chase Cycle Route

This cycle route is 34.3 miles long but short-cuts can be taken if required or it is possible to divide it into two separate north and south 'loops' by using the suggested linking route. Minor roads have been chosen in preference to busier main roads wherever possible.

P Car Parking
Park in Upton on Severn or at Clive's Fruit Farm* (Upper Hook Road, Upton on Severn WR8 0SA).
*please check with staff where you may park during busy periods.



	Meadows cycle route
	Linking route
	National Cycle Network route
	Meadows site
	National Cycle Network route number
	Church
	Pub
	Post office and local shop
	Car parking

0 Miles 1 2
0 Kilometres 1 2 3

Reproduced by permission of Ordnance Survey on behalf of HMSO. © Crown Copyright and database rights 2019. All rights reserved. Ordnance Survey Licence NUMBER 100036340
Cartography © FourPoint Mapping